



AVENBURY LAKES ARCHITECTURAL STANDARD

Patio - Overview of Modifications to Patio Area

Board Reviewed and Approved 4/09/15

=====

This Standard page and the items in the checklist below MUST be attached to your Modification Request Form to be accepted for review.

- Contractor Proposal to include description and specifications of product/materials
- Drawing and photo of installation site
- Any permits needed by the city must be delivered to the Information Center prior to beginning the project

STANDARD

Builder's Floor Plans on following pages

PARIED VILLAS

- Red Admiral: Dwellings constructed with a covered patio, screened porch or sunroom shall have the option to construct a 9' x 14' patio behind the Great Room as shown on the Builder's floor plans - attached.
- Monarch: Dwellings construction with a covered patio, screened porch or sunroom shall have the option to construct a 9' x 17'6" patio behind the Great Room as shown on the Builder's floor plans.

GARDEN HOMES

- Aster: Dwellings constructed with a covered patio, screened porch or sunroom shall have the option to construction an 8'6" x 12'4" patio behind the Master Bedroom as shown on the Builder's floor plans.
- Trillium: Dwellings constructed with a covered patio, screened porch or sunroom shall have the option to construct a 12' x 12' patio behind the Master Bedroom as shown on the Builder's floor plans.

MANOR HOMES

- American Star: Dwellings constructed with a covered patio, screened porch or sunroom shall have the option to construct a 21'9" x 10' patio behind the dining room/sunroom/patio/porch addition as shown on the Builder's floor plan.
- Nivea: Dwellings constructed with a covered patio, screened porch or sunroom addition shall have the option to construction on either side of said addition as shown on the Builder's floor plans.
- Manor Homes Only - In lieu of a patio, a deck may be constructed in the same location and of the same size as a patio. The deck shall be constructed of a maintenance free vinyl composite material according to City of Avon Code. Railing, cap board and skirt shall be of the same material.
- Installation of fences or railings - See Porch Railings & Step Hand Rails.

CONSTRUCTION STANDARD

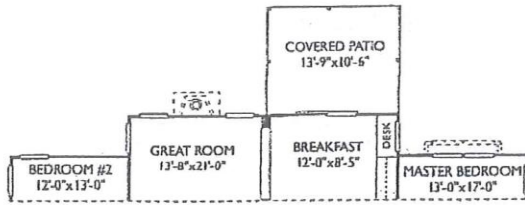
- Must have professionally installed
- Cement patios shall be constructed according to the Builder's standards and shall be on a graded site with a minimum of 2" of crushed stone and 4 in. thick wire reinforced, standard mix, untinted ready mix concrete.

HOMEOWNER RESPONSIBILITY

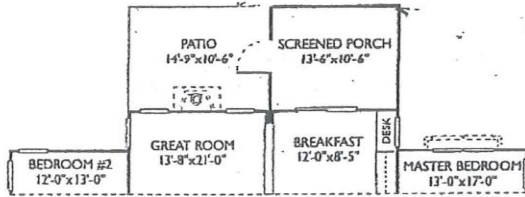
- Homeowner assumes all liability for installation, maintenance and repair.
- A copy of your complete Modification Request will be placed in resident's permanent file.
- Homeowner must contact Information Center when project is complete so a committee member can do a final inspection.
- Resident should keep a copy in their homeowner record.

SEE EXAMPLES ON NEXT 3 PAGES

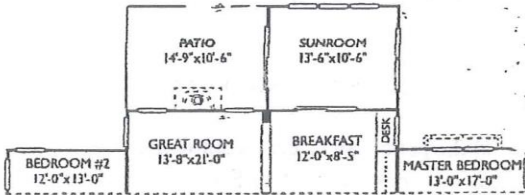
NIVEA Manor Homes



Covered Patio Option

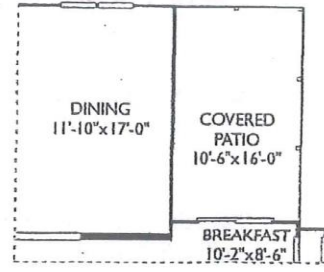


Screened Porch Option

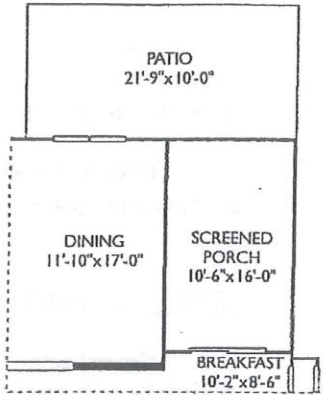


Sunroom Option

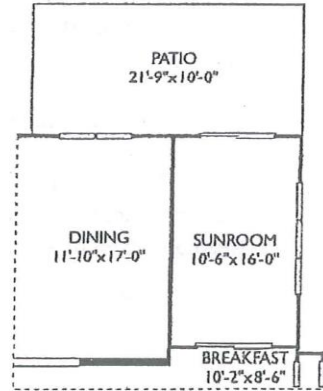
AMERICAN STAR Manor Homes



Covered Patio Option

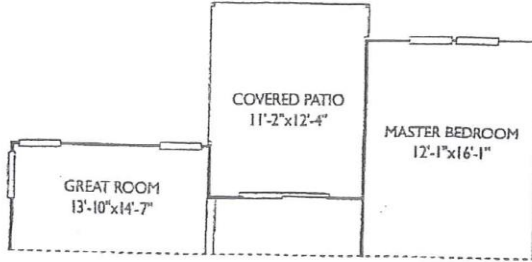


Screened Porch Option

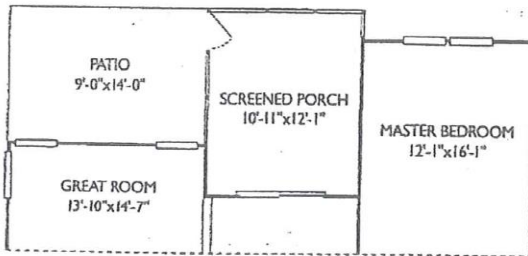


RED ADMIRAL

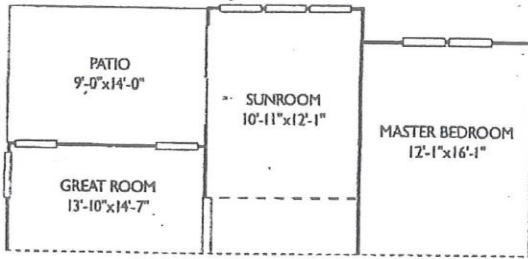
Paired Villas



Covered Patio Option



Screened Porch Option



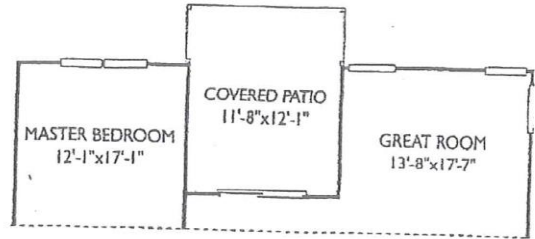
Sunroom Option



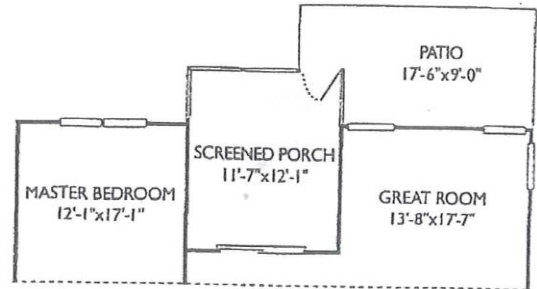
Butterfly Collection

MONARCH

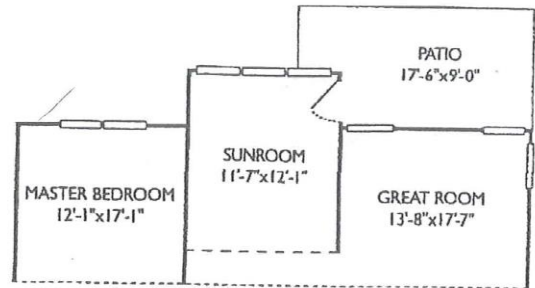
Paired Villas



Covered Patio Option



Screened Porch Option

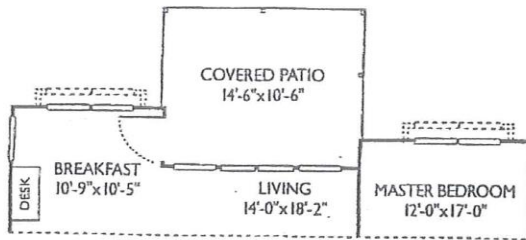


Sunroom Option

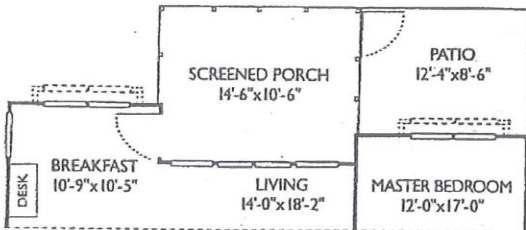


Butterfly Collection

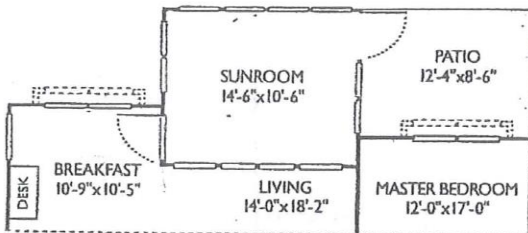
ASTER Garden Homes



Covered Patio Option



Screened Porch Option



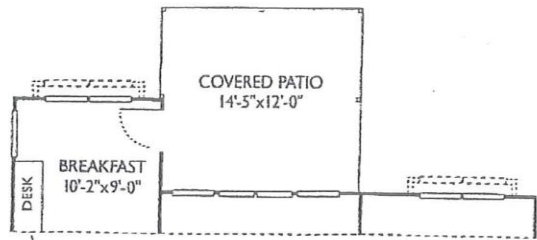
Sunroom Option

(NOTE: A fireplace is not available with any of the above options.)

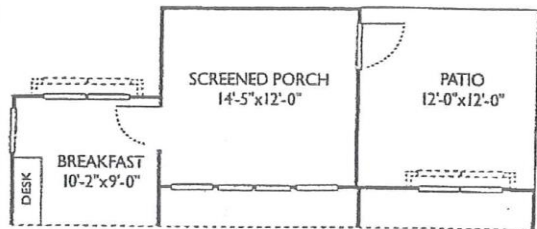


Wildflower Collection

TRILLIUM Garden Homes



Covered Patio Option



Screened Porch Option



Sunroom Option

(NOTE: A fireplace is not available with any of the above options.)



Wildflower Collection