



AVENBURY LAKES ARCHITECTURAL STANDARD

Windows - Replacement Dormer Windows

Board Reviewed and Approved 2/16/17

=====

This Standard page and the items in the checklist below MUST be attached to your Modification Request Form to be accepted for review.

- Photo of dormer window/windows to be replaced.
- Photo or illustration of replacement window/windows.
- Copy of the work order from the installer.

Standard

All windows must match the current windows in size, exterior color, number and size of grids, trim, non-tinted. See photos below.

Dormer Window Glass Replacement

Homeowner is responsible for ordering the correct glass replacement and having the work installed.

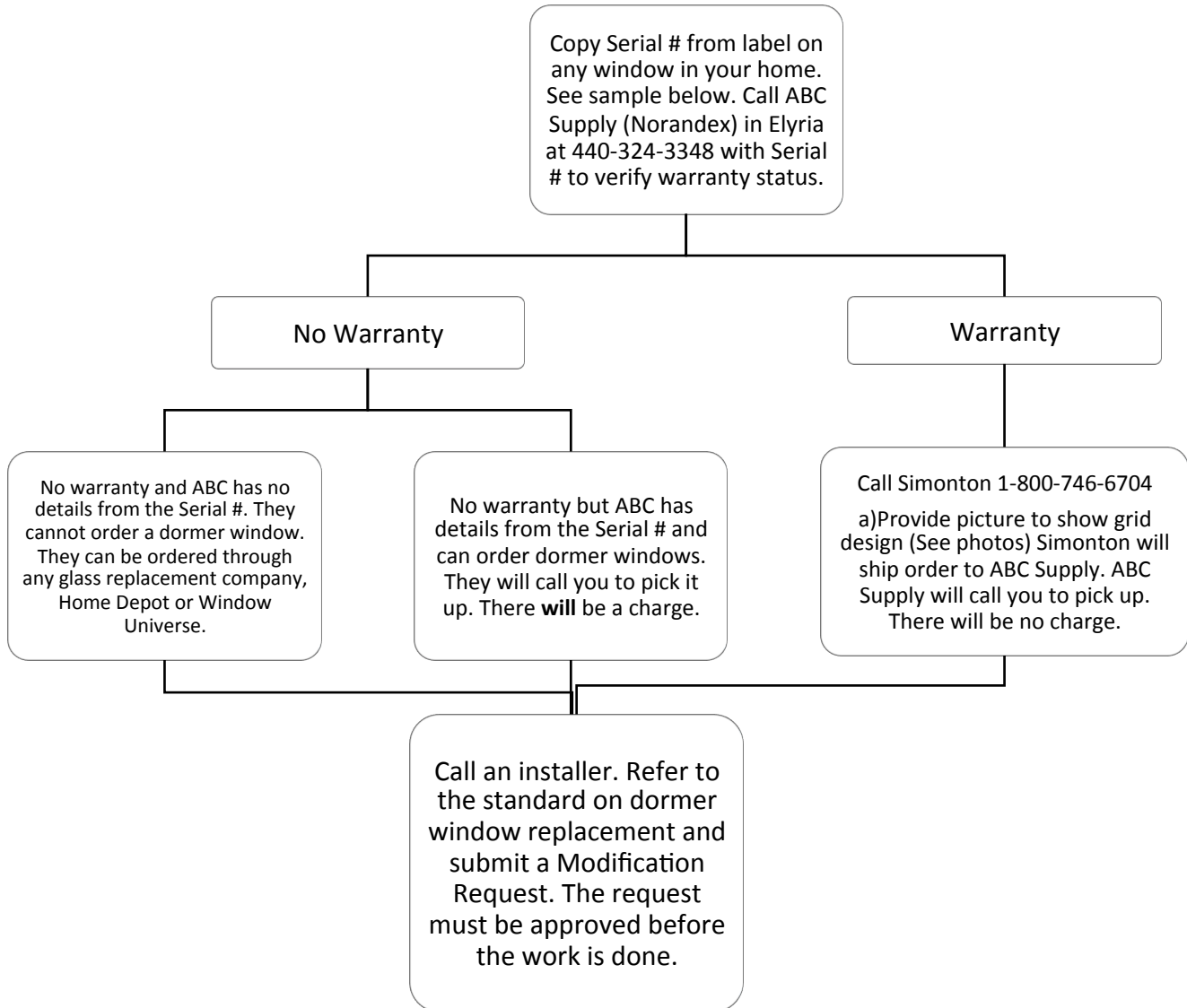
- **Must be professionally installed**
- **Must be of the same/better quality than window being replaced.**
- **Window trim must match current windows in color and size.**

Homeowner Responsibility

- Homeowner assumes all liability for installation, maintenance, and repair.
- A copy of the proposal will be placed in resident's permanent file.
- Homeowner must contact the information center when project is complete so a committee member can do a final inspection.
- Resident should keep a copy in their homeowner records, as these conditions will be binding on future owners.



Process for Ordering a Dormer Window Replacement (February 2017)



Sample Serial # Label

